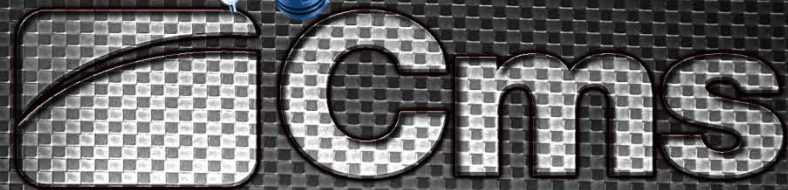


# ENJOY THE FUTURE

International Sales Meeting



advanced materials technology



plastic technology

# CMS Connect

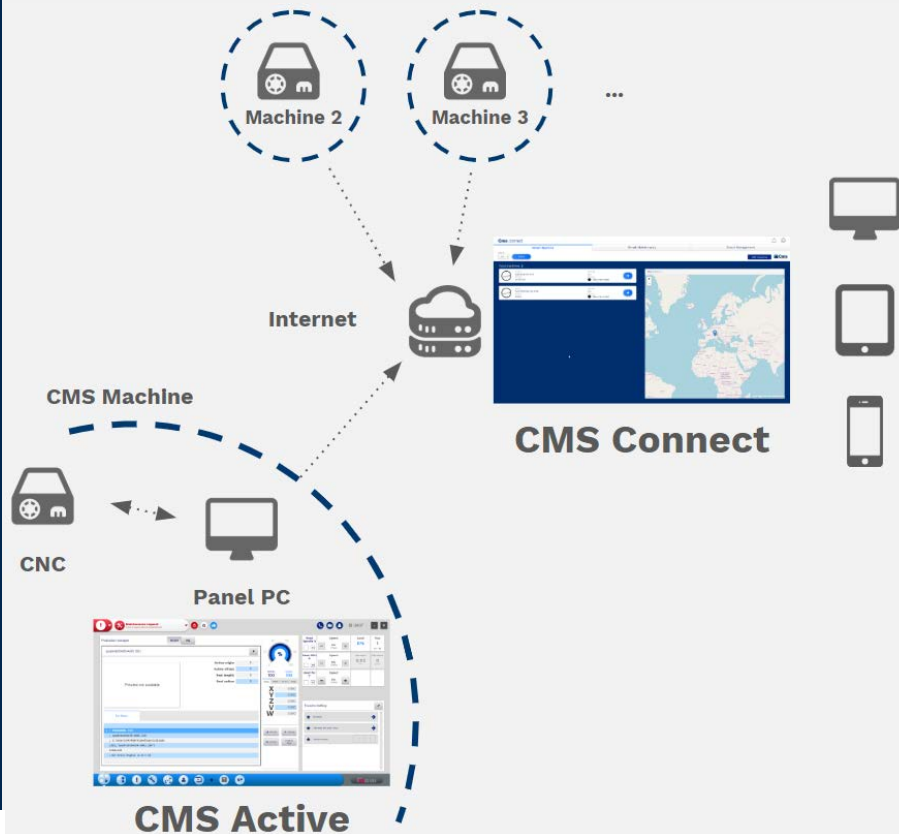
N. Carminati – D. Bellatreccia

# CMS Connect - Agenda

- ❑ OVERVIEW
- ❑ PRODUCT NEWS

# CMS Connect

## Overview 1/1



## Web portal with this features:

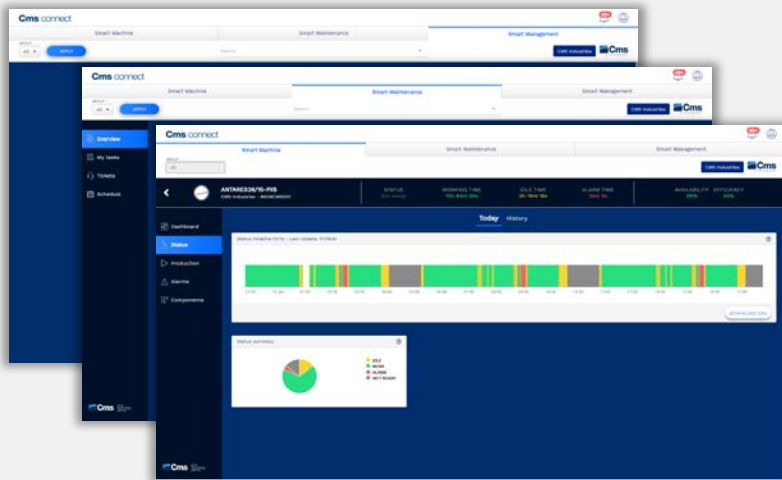
- See all customer's **CMS machines status in one application**
- **Remote monitoring machine** and all its components status
- Receive **automatic push notifications** when something is happening on the machine (typically alarms)
- Perform and **keep tracking of the main maintenances** of all own machines
- Get out from unpleasant situations (if recognized from CMS) with a **step-by-step procedures** and video clips
- Cms knows the machine's health conditions. This will **decrease the time between a failure and solution**, when a customer calls for a problem
- **Annual subscription fee**

# CMS Connect - Agenda

- ❑ OVERVIEW
- ❑ PRODUCT NEWS

# CMS Connect

## Product news (current features) 1/2



### 1. Monitor the machine status

- ✓ Spindle status & history
- ✓ Cnc status & history
- ✓ Alarms status & history

### 2. Manage the maintenance of the machine

- ✓ Perform and keep tracking of the main maintenances of all own machines
- ✓ Add personal customer maintenances

### 3. Monitor the machine production

- ✓ Production status & history
- ✓ Monitor performance data

# CMS Connect

## Product news (2020 features) 2/2

### 1. Machine status monitoring

- ✓ Data visualization and graphs improvement

### 2. Assistance

- ✓ CMS-Maintenances improvement
- ✓ Assistance ticket opening for all customers
- ✓ Develop the new application "CMS Assistance" for remote support, connected to machine an customer phone-camera

### 3. Machine production monitoring

- ✓ Advanced production monitoring, with history and comparing-tools.
- ✓ JOB loader and editor for the cnc-program

### 4. CMS Active & Connect integration

- ✓ CMS Active & Connect continuous integration

### 5. Retrofit

- ✓ Allow non CMS-Connect-ready machine to be connected to the cloud



**Cms**

| *your  
technology  
partner*

**Thanks for your attention!**